

LET AGREED



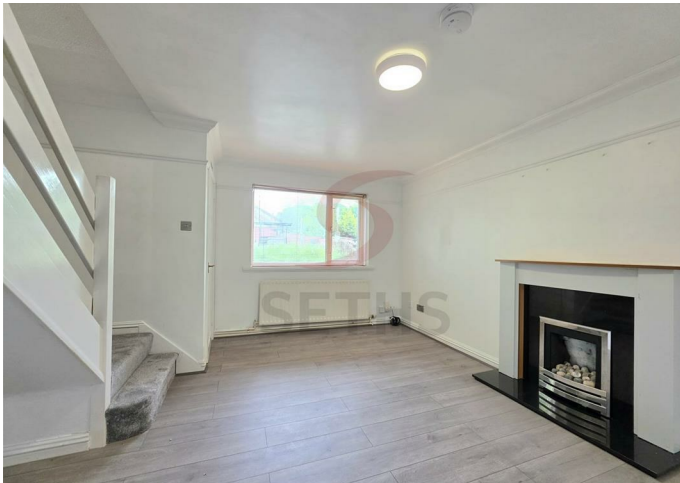
House - Terraced

# SHARPLEY DRIVE LEICESTER LE4 1BP

## £925 Per Month

### FEATURES

- Terrace
- Lounge
- Bathroom
- Two Bedroom
- Kitchen
- Garden



 **SETHS**

# 2 Bedroom House - Terraced located in Leicester

**\*\*No Deposit Option Available\*\***

Seths are proud to present this well presented two bedroom terraced property located in the popular area of Beaumont Leys on Sharpley Drive.

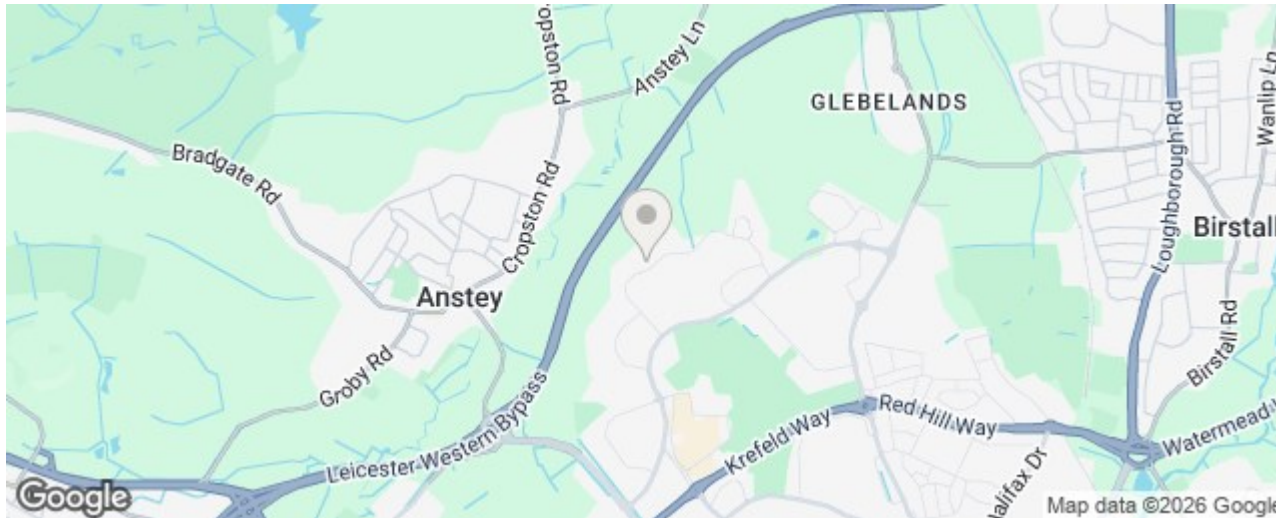
The property offers a modern and spacious lounge with stairs leading to the first floor, creating a bright and welcoming living space. To the rear, you will find a good sized kitchen with pleasant views over the garden.

Upstairs comprises two well-proportioned bedrooms along with a family bathroom.

Externally, the property benefits from a generous rear garden, perfect for relaxing and enjoying the longer summer days.

This home would be ideal for couples, small families, or professionals seeking comfortable living in a convenient location.

Rent: £925PCM  
 Deposit: £1065  
 Tenancy Term: Periodic  
 Council Tax Band: A




Call us on  
**0116 266 9977**

**let@seths.co.uk**  
**www.seths.co.uk**

**Council Tax Band**

**A**

Energy Efficiency Rating		
	Current	Potential
<i>Very energy efficient - lower running costs</i>		
(92 plus) <b>A</b>		
(81-91) <b>B</b>		
(69-80) <b>C</b>		
(55-68) <b>D</b>		
(39-54) <b>E</b>		
(21-38) <b>F</b>		
(1-20) <b>G</b>		
<i>Not energy efficient - higher running costs</i>		
<b>England &amp; Wales</b>	EU Directive 2002/91/EC	

Agents Note: Whilst every care has been taken to prepare these particulars, they are for guidance purposes only. All measurements are approximate and are for general guidance purposes only and whilst every care has been taken to ensure their accuracy, they should not be relied upon and potential buyers are advised to recheck the measurements.

