



NULL

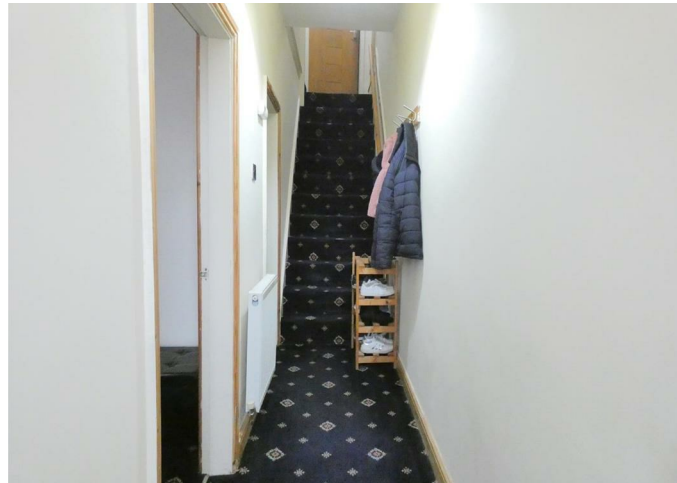
House - Terraced

# STOUGHTON STREET SOUTH LEICESTER LE2 0SH

## £225,000

### FEATURES

- Freehold
- Close to many local amenities and City Centre
- Sitting Room
- Kitchen
- Popular Location
- Two Bedrooms
- Dining Room
- Upstairs Bathroom

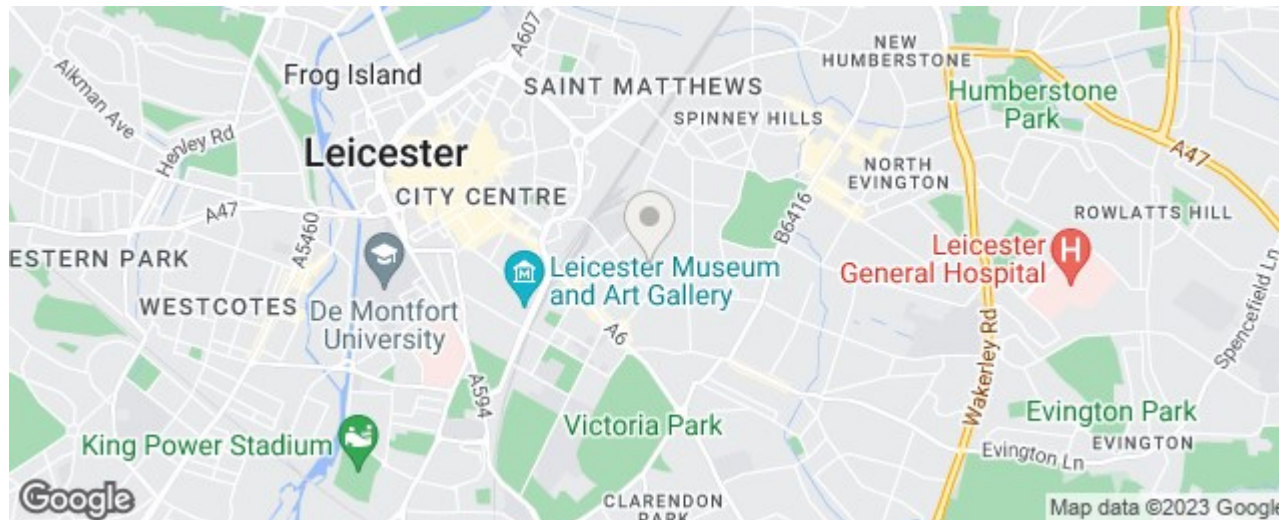


 **SETHS**

# 2 Bedroom House - Terraced located in Leicester

A well presented Two Bedroom Mid Terraced House located in the ever so popular area of HIGHFIELDS within walking distance of schools, shops and places of worship. Briefly the property comprises of an entrance hall, sitting room, dining room, kitchen, two bedrooms and a shower room. The property also benefits from gas central heating, a rear yard and uPVC double glazing.

Contact Seths for viewing arrangements



Call us on

0116 266 9977

[sales@seths.co.uk](mailto:sales@seths.co.uk)

[www.seths.co.uk](http://www.seths.co.uk)

Council Tax Band

A

## Energy Efficiency Rating

	Current	Potential
Very energy efficient - lower running costs		
(92 plus) <b>A</b>		
(81-91) <b>B</b>		<b>86</b>
(69-80) <b>C</b>	<b>63</b>	
(55-68) <b>D</b>		
(39-54) <b>E</b>		
(21-38) <b>F</b>		
(1-20) <b>G</b>		
Not energy efficient - higher running costs		
<b>England &amp; Wales</b>	EU Directive 2002/91/EC	

Agents Note: Whilst every care has been taken to prepare these particulars, they are for guidance purposes only. All measurements are approximate and are for general guidance purposes only and whilst every care has been taken to ensure their accuracy, they should not be relied upon and potential buyers are advised to recheck the measurements.

