

IMPERIAL QUARTER WINDSOR



RESIDENCES IN CLOSE PROXIMITY TO ONE OF THE UK'S MOST HISTORIC LANDMARKS, THE ROYAL WINDSOR CASTLE.

EASY ACCESS TO CENTRAL LONDON

ENQUIRE NOW

Bespoke One, Two & Three Bedroom Apartments from **£375K**

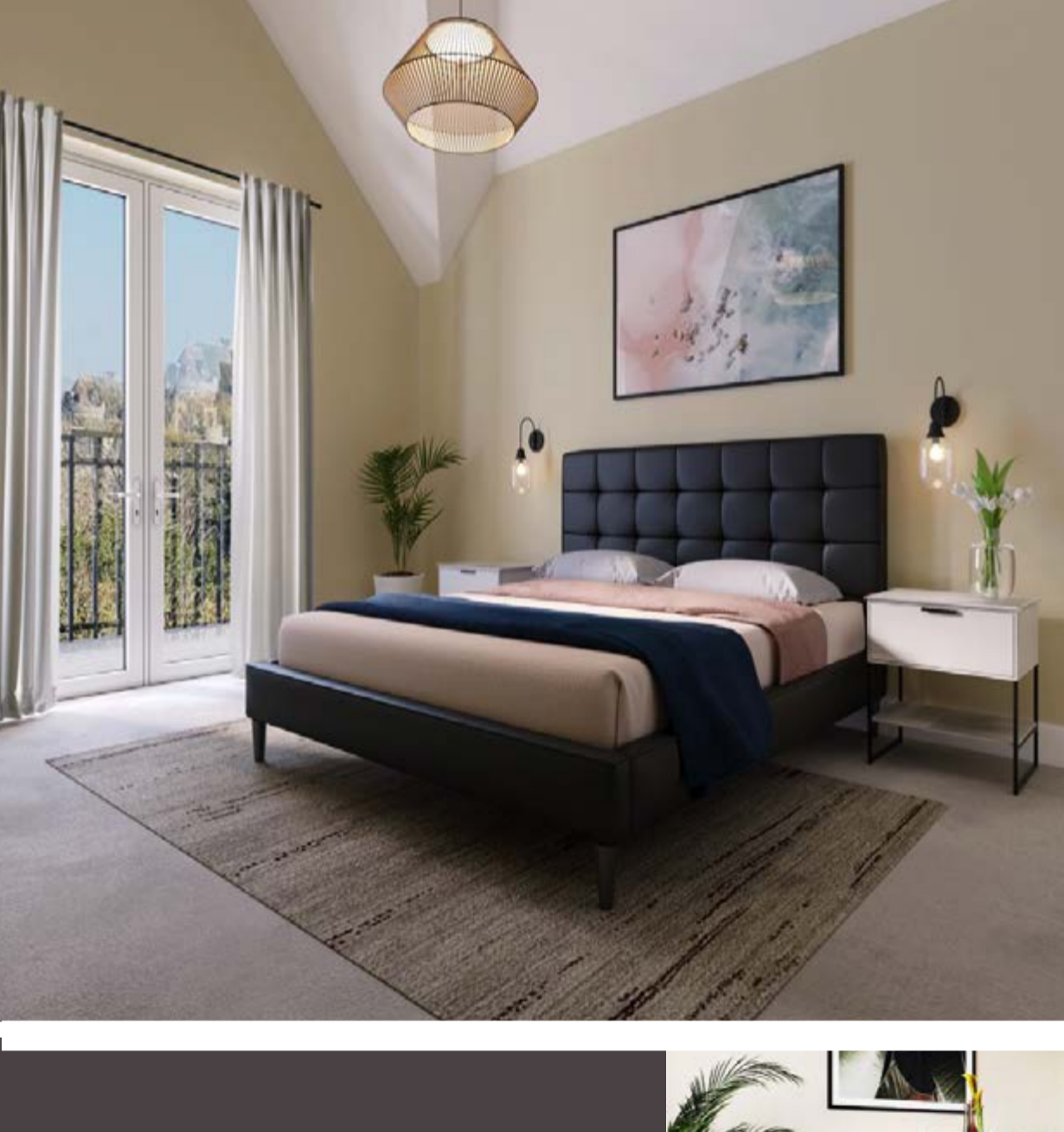
*UP TO 12% PROJECTED YIELD

LUXURY LIVING *with a* ROYAL ADDRESS

Imperial Quarter occupies an ideal location close to the Royal Windsor Castle and the new crossrail links that offers direct access to Central London and the financial district in 30-40 minutes. Imperial Quarter is one of the most attractive and in-demand locations in the UK.

Imperial Quarter is built to a high specification and offers a modern lifestyle in this historic location with fully fitted kitchens and top of the range appliances.

This beautiful estate offers bright, airy living spaces and bedrooms with premium fixtures, furnishings and other high end design touches.



AESTHETICALLY DESIGNED WITH FINE FINISHES



IMPERIAL QUARTER

ROYAL LOCATION & NEIGHBOURHOOD

LOCATION

Windsor Train Station	0.9 Miles
Slough Train Station	3 Miles
Ascot Race Course	6.5 Miles
Windsor Castle	1 Miles
Legoland Windsor	2 Miles
Windsor Racecourse	0.9 Miles
Eton College	2 Miles
King Edwards VII Hospital	1 Miles
Windsor Great Park	2 Miles
Heathrow Airport	9 Miles
Central London	15 Miles

View Street Map

Scan QR code or click below link
goo.gl/maps/696skR6sAZ7oETPz6



BOOK YOUR INTEREST