

34 Carlton Terrace Great Cambridge Road
 , London, N18 1LD

**Offers
Over**

3 bedroom extended family home with two bathrooms, garage to rear and offered with no chain.

Upper Edmonton

34 Carlton Terrace Great Cambridge Road

, London, N18 1LD



Reception Room One
16'2" x 12'5" (4.94m x 3.78m)

Directions

Reception Room
11'6" x 12'1" (3.51m x 3.69m)

Kitchen
7'5" x 13'5" (2.26m x 4.08m)

Sun Room
13'11" x 9'8" (4.24m x 2.95m)

Shower Room
0' x 0' (0m x 0m)

Cupboard
0' x 0' (0m x 0m)

Landing
0' x 0' (0m x 0m)

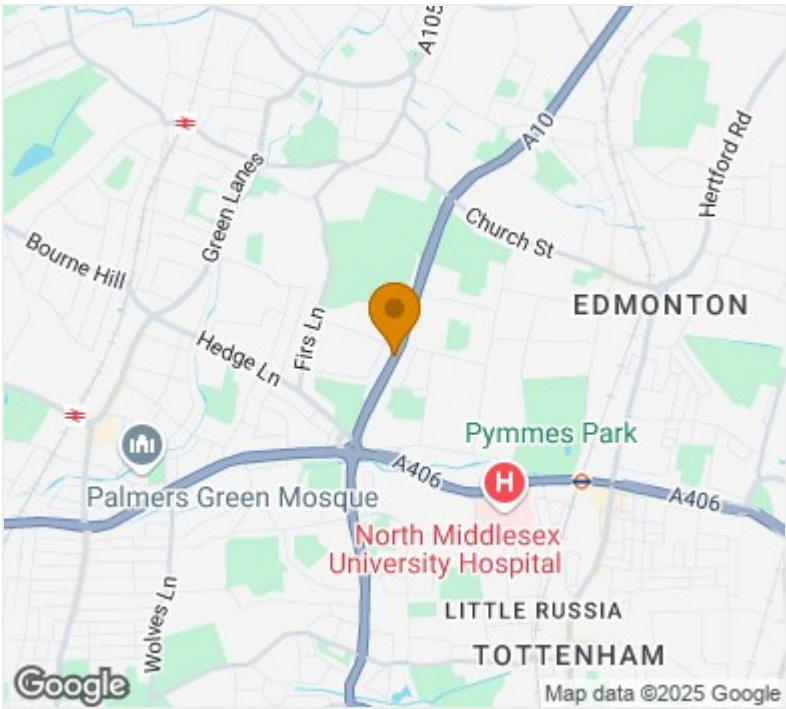
Bedroom One
16'4" x 11'6" (4.97m x 3.51m)

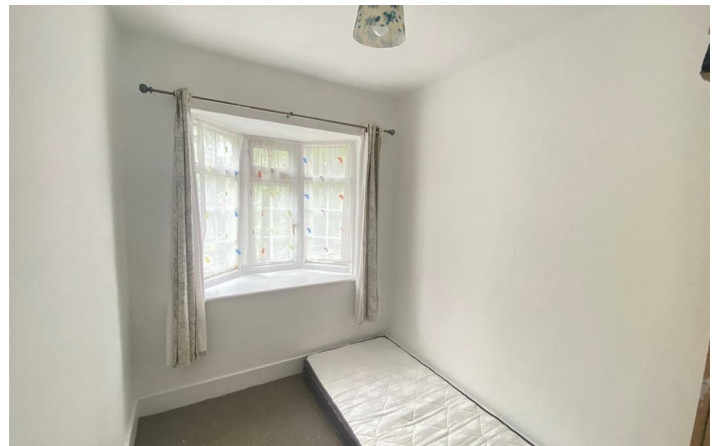
Bedroom Two
13'5" x 13'9" (4.08m x 4.2m)

Bedroom Three
9'1" x 6'7" (2.77m x 2.01m)


Bathroom
0' x 0' (0m x 0m)

Garage
14'11" x 14'10" (4.54m x 4.51m)




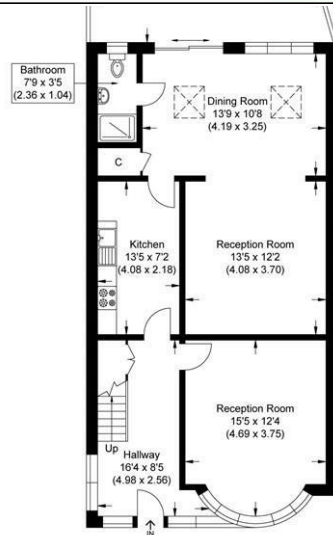


Energy Efficiency Rating

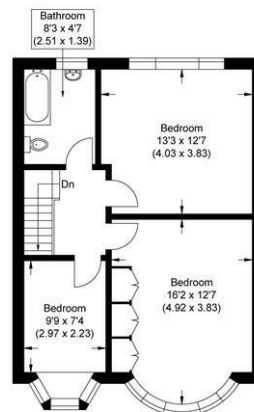
	Current	Potential
Very energy efficient - lower running costs		
(92 plus) A		85
(81-91) B		
(69-80) C	69	
(55-68) D		
(39-54) E		
(21-38) F		
(1-20) G		
Not energy efficient - higher running costs		
England & Wales		EU Directive 2002/91/EC 

Environmental Impact (CO₂) Rating

	Current	Potential
Very environmentally friendly - lower CO ₂ emissions		
(92 plus) A		
(81-91) B		
(69-80) C		
(55-68) D		
(39-54) E		
(21-38) F		
(1-20) G		
Not environmentally friendly - higher CO ₂ emissions		
England & Wales		EU Directive 2002/91/EC 



Ground Floor



First Floor

Illustration for identification purposes only, measurements are approximate, not to scale.

These particulars, whilst believed to be accurate are set out as a general outline only for guidance and do not constitute any part of an offer or contract. Intending purchasers should not rely on them as statements of representation of fact, but must satisfy themselves by inspection or otherwise as to their accuracy. No person in this firm's employment has the authority to make or give any representation or warranty in respect of the property.

Sales | Lettings | Management | Mortgages | Land & Development

39 Green Lanes, London, N13 4TN

0208 888 7599 | info@zuplex.net

Company Registration Number: 09243800

